

## The Burden Center Cultural Landscape Report: A Guide for the Future

By John Monroe

It is hard to believe that it has been seventeen years since Steele died. He was the last of the Burden descendants to live at Windrush and was most responsible for developing the landscape. Steele is no longer here for us to ask what his intentions were or what he would do now. The Cultural Landscape Report documents the history of Windrush and the wishes of the Burdens, which can be used as guides as the master plan is further developed and implemented.

The finishing touches to the LSU Burden Center Cultural Landscape Report are complete. This report is the work of Suzanne Turner Associates, a Baton Rouge Landscape Architecture firm. It was commissioned in conjunction with the development of a master plan for the LSU AgCenter's Burden Center but it covers the areas of Windrush administered by the LSU Rural Life Museum as well. The report follows guidelines from the National Park Service (NPS). The NPS defines a cultural landscape as a "geographic area associated with a historic event, activity, or person or exhibiting other cultural or aesthetic values." The purpose of the report is to identify elements of Burden's landscape that should be preserved due to their significance.

The Cultural Landscape Report contains a list of six "character-defining features" that "contribute most in creating the sense of place that is most positively associated with the Burden Center landscape." The entry sequence by car that sets the tone for the visitors' impressions as they drive from the Essen Lane entrance through the display gardens and back to the Rural Life Museum is one of them. The rural character that pervades the entire property is another. Wouldn't it be wise to return to this list from time to time and inspect Windrush to ensure against loss of integrity or interference with these important features?

Steele and Ione Burden, from time to time, recorded their wishes in both writing and video, for further development of the property. These records are documented in the Cultural Landscape Report. Many of them are quite specific. On Windrush Gardens: "The design as existing today should remain the same and the feeling of an old garden kept." On the wooded areas: "Under no circumstance must the wooded areas ever be destroyed;" and, "The woods on the south side of I-10 should have walking paths serving as nature trails." A recommended plant list for the path from the *Old Gardens* to the lake:

"The woodland path should be bordered with azaleas, hydrangeas, aspidistra, ardesia, and all the hardy shade loving plants..." and "plantings of semitropicals such Windmill palms, bamboos, the varieties of bananas, livingstonia palms, etc., and such trees as live oaks, cypress, Maple, dogwood, crape myrtle, cow oak..."

On maintaining the perimeter road and circular intersections: "The other circle and triangle should be carefully maintained with colorful plants and trees" and "The Perimeter Road flanked by woods can be made so attractive that it will be a privilege to walk or drive around it." Their comments are extensive and valuable references that should be reviewed regularly in conjunction with inspections to evaluate changes that may have occurred.

One technique used in developing the Cultural Landscape Report was a comparison of old photographs and maps with current conditions. In 1997, Tracy Stakely documented and mapped the plant materials in Windrush Gardens as part of his thesis for a master's degree in landscape architecture. Suzanne Turner Associates revisited this work and compared current conditions with those that existed in 1997. The magnitude of the change is startling. Then vs. now photographs—called "repeat photography"—were also used to evaluate the same thing.

.....Continued on Page 2



Burden home, 1922-1925



Burden home, 2010

### In this Issue:

✿ From the Chair	2
✿ Diggin in the Dirt	3
✿ Herb Garden	4
✿ Winner of Art Show	5
✿ Arbor Day	10

## Reflections from the Chair

By Judy Foil, Chairman

Retreat to go forward. What's that you say? As we set our course for 2012 and beyond, the BHS Board took a step back to reflect on the first five years of our organization. A small and committed group of master gardeners with a passion for Burden, Ginnie Bolin, Leslie Bardwell, Barbara Quirk, Marilyn Root, Aline Creed, Caroline Daigle, Pat Ray, Bette Stoelzing, and Judy Weaver met with LSU officials in 2006 and received authorization to form a volunteer "friends" group. A group was created in 2007 with the mission of supporting and advocating for good development and careful preservation of the 400 acres of Burden property administered and cultivated by the AgCenter. That group became the Burden Horticulture Society. We've learned that the traits of that first group, commitment and passion, are also the keys to our future.



From that small nucleus, BHS has grown into an organization that in 2012, will sponsor 24 major events, will host over 700 students for the Project Learning Tree program, and will continue to assist in the care of Windrush and the All American Selection Display Gardens. Arbor Day, featuring a "plant your very own tree" program, Smokey the Bear, give-a-ways from sponsors, and a wood products display, doubled in attendance this year. Brush with Burden, which attracted 80 paintings from artists last year drew a record 132 entries this year. All of these activities are in support of our master plan to create a destination for generations. So now, more than ever we still need committed volunteers with a passion for Burden.

Opportunities abound. You can be educated at Reflections monthly or you can educate others at Project Learning Tree in the spring and fall. You can actually dig in the dirt at Windrush Gardens weekly or you can help others enjoy the fruit of the digging at Burden Garden Day in June. You can treat yourself to a photography workshop April 12<sup>th</sup> and 14<sup>th</sup> or enjoy the art of others at Brush with Burden. Be entertained by some of our community's finest musicians Saturday, April 21 in Windrush Gardens and gather your family or friends for a walk through the corn maze in October.

Emilie Barnes writes in Everything I Know I Learned in My Garden, "Gardeners are always in the process of picturing the next phase of our perennial borders or the newest choice for our cutting gardens or next year's plans for our vegetable plots. We are continually assessing what has gone right and what has gone wrong, and what might work better and what might be simply wonderful...Lessons...are ever-renewing, a source of ongoing energy and passion. They are the impetus to our plans." So come out and join us. Help us figure out what "might work better and what might be simply wonderful." We're listening.

---

### The Burden Center ...Continued from Page 1...

The primary recommendation in the report is *rehabilitation*. Rehabilitation is "the process of making possible a compatible use for a property...while preserving those portions or features which convey its historical or cultural value." The challenge will be to locate new features without having an impact on significant features or important landscape views. For certain areas of Windrush, where Steele Burden's landscape design is still dominant, the depiction of the landscape as it was during the period of significance is recommended. This would require a carefully kept inventory of plantings, preserving and restoring materials from the period of significance and removing materials from other periods. The recommended period of significance spans the decades from the 1930s through the 1960s when Steele was most actively shaping and planting the landscape.



Aerial view of Windrush Gardens circa 1940s.

The Cultural Landscape Report uses the term *antebellum revival* to describe Steele Burden's landscape style and its connection with earlier landscape design history. There is no advantage more valuable than a rich cultural history to promote public interest and support. What we have is unique, significant and compelling; no other place has what we have.

## Diggin in the Dirt

By Dr. Kathryn Fontenot

If you have a home garden, are interested in starting one or interested in producing vegetables for sale, then you should mark your calendar for Saturday, June 30. The Garden Fest at Burden Center will start at 8:00AM and run until 12:00 noon. The festival will start at the All America Selections (AAS) garden where you will be able to view the latest selections of vegetables, herbaceous annuals and perennials. Information on how to grow these plants that were trialed across the United States will be available. Enjoy a hayride from the AAS garden to the Food and Fiber Research Facility for a tour of the fields where experts will discuss everything from planting schedules to controlling disease and insects to favorite varieties of sweet corn, peppers, tomatoes, and watermelons. Taste tests will also be conducted to determine which are your favorites of these vegetables.

A portion of the research you'll hear about is being funded by a USDA Specialty Crop Grant through the Louisiana Department of Agriculture and Forestry which was awarded to Dr. Kathryn Fontenot and Dr. Jeff Kuehny. They along with a team of plant experts will spend the next three years looking at 4 particular crops: lettuce, strawberries, peppers, and tomatoes. The goal of the grant is to determine varieties that meet consumer demands but also yield well, are less prone to insect or disease damage, and are economically beneficial for the farmers to produce. The results from this research will help producers and home gardeners make research-based decisions when selecting a new crop or variety to plant. For instance, there is an overwhelming demand for heirloom varieties of vegetables. Consumers find they have more flavor than hybridized varieties. Local producers generally grow hybrid varieties because they have higher yields and are bred for disease resistance and blemish free fruit. But because the demand is so high for heirloom fruit, it might be worth the grower trying... especially if he or she has some data to back up the financial risk of growing heirlooms. Home gardeners may find it easier to accept growing a lower yielding heirloom variety to eat from their own garden.

Thanks to this grant and seed donations from Rupp Seed and Johnny's Seed, we will be trialing ten heirloom varieties of tomatoes. The varieties are not only being grown at Burden Center but also at seven other farms across Louisiana. We need to ensure that these varieties do well not only here in the Baton Rouge area, but to the north, south, east and west of us as well. Similar studies are being conducted on the other crops. Preliminary results from this trial will be discussed at the field day. Speaking of tomatoes...we will offer a prize for the biggest tomato brought to the Garden Festival.

The schedule for the Garden Festival is as follows:

- 8:00AM to 12:00PM Hay rides to fields, AAS Garden and Children's Garden Tours, vendor booths, face painting, space walk, and family fun
  - 8:00AM to 9:30AM Omelets and crepes prepared by the Louisiana Egg Council
  - 9:30AM to 10:30AM Bloody Mary taste test and contest.
  - 10:00AM to 11:00AM Louisiana Culinary Institute cooking with vegetables tasting and contest; recipes with nutritional value provided by EBR Extension
  - 10:00AM to 1:00PM Live music in the All American Rose Garden
  - 11:00AM to 1:00PM Baton Rouge Food Truck cooking contest and food for purchase
- Organizational booths will include information on herbs, camellias and bonsai as well as the Burden Horticulture Society. Equipment companies will be on hand to display the latest lawn and garden equipment.

(A producers only field day at Burden Center for commercial growers is scheduled for Monday, July 2 at 8:00AM or contact Kathryn Fontenot at [kkfontenot@agcenter.lsu.edu](mailto:kkfontenot@agcenter.lsu.edu).)

### Not getting e-mail announcements?

Go to the "Join Us" page of [www.BurdenHorticultureSociety.com](http://www.BurdenHorticultureSociety.com) and enter your information or email Connie Abboud at [abbcon@bellsouth.net](mailto:abbcon@bellsouth.net)

### Burden Horticulture Society Board

- Dr. Jeff Kuehny  
..... *Ex-Officio Director*
- Annette Barton  
.....*Ex-Officio Director*
- Dr. John Russin  
.....Liaison to AgCenter
- Judy Foil  
.....*Chair*
- Mary Jane Howell  
.....*Treasurer*
- Aline Creed  
..... *Secretary*

### Directors:

- Ginnie Bolin
- Ira Babin
- Wanda Chase
- Peggy Cox
- Sherry Eubanks
- Len Kilgore
- Simone Kramer
- Penny Miller
- Cary Saurage
- Susan Severance
- Jamila Sykes
- Billy Weldon

### Advisory Committee:

- Leslie Bardwell
- Jim Barry
- Coleman Brown
- Jeanne Clement
- Virginia Gardener
- Gigi Gauthier
- Dr. Pat Hegwood
- Barbara Laundun
- Frances Monroe
- John Monroe
- Barbara Quirk
- Marilyn Root
- Charles Yarbrough
- Malcolm Tucker

### Newsletter Editor:

- Ginger Ku

## The Herb Garden at Burden Center

by Jane Paccamonti and Lanier Cordell

Capitalizing on the proximity of the medical complexes of Our Lady of the Lake and Baton Rouge General, and the growing interest in medicinal herbs, the Burden Center will create a new teaching and demonstration Herb Garden with a focus on the medicinally useful plants that are indigenous to our region and those brought here by early settlers.

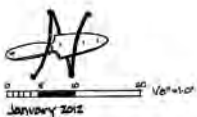
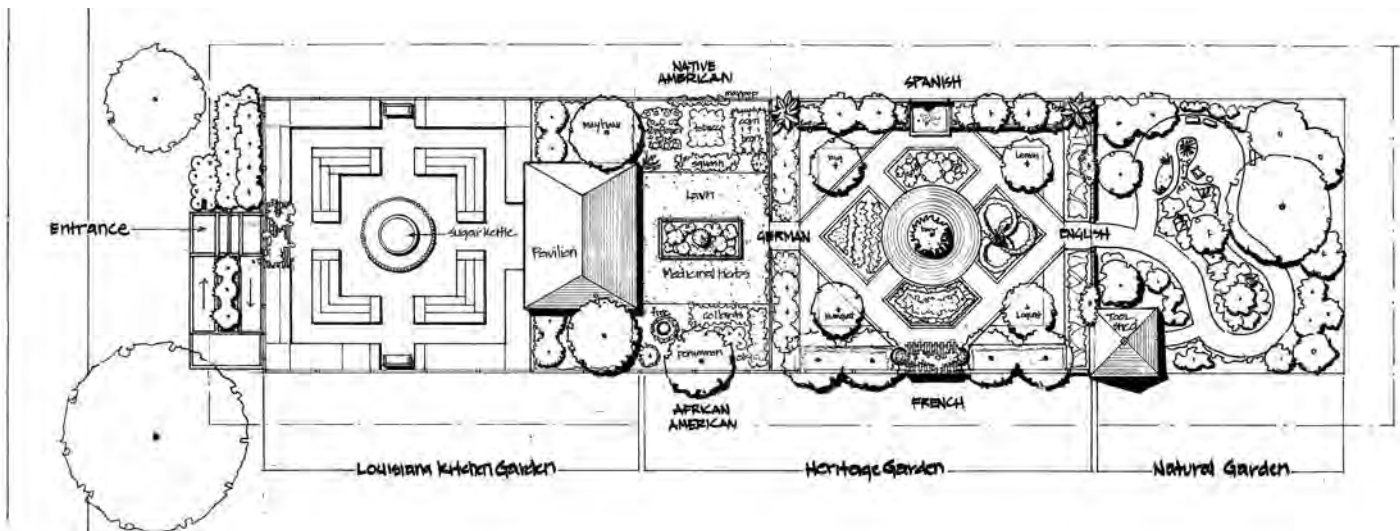
This garden is being created and sponsored by the Herb Society of America Baton Rouge Unit and will serve as an educational opportunities for those who wish to develop a better understanding of herbal plants and how they can enrich our mind, body and spirit. The Herb Garden is comprised of four separate gardens, each with special theme and reflecting the various influences of the peoples who have lived in our state.

The first is a “Louisiana Kitchen Garden” displaying culinary and medicinal herbs common to our early gardens. Visitors learn what role these plants played historically and their uses today. This garden will include a gathering spot for gardening clubs, school groups and individuals to learn and reflect on the garden’s sensory experience.

The design of the overall garden reflects the influences of Native Americans, Africans, Caribbean Islanders, French, Spanish and other Europeans that came to Louisiana, each bringing their own gardening style and plant materials.

“The Heritage Garden” will introduce the visitor to the diversity of each of these cultures and what they contributed to Louisiana. A variety of fencing, walkway, edgings and other materials will allow visitors to see the many options connected with our rich heritage that may be useful in their own home gardens.

The last section of the garden is “The Natural Garden” which breaks away from the formal rigid lines and geometric shapes of the early gardens. Gentle curving lines and an integrated plant pallet give the visitor a more naturalistic setting with an updated interpretation. This style can be easily incorporated into the typical landscape and allow the homeowner the sensory experience herbs can provide.



**The Herb Garden**  
at Burden Center

Sponsored by  
**Baton Rouge Unit**  
The Herb Society of America

**Please check our website for new activities, updates and changes as so much depends on the weather.**

**[www. BurdenHorticultureSociety.com](http://www.BurdenHorticultureSociety.com)**

## Winners of Burden Horticulture Art Show Announced

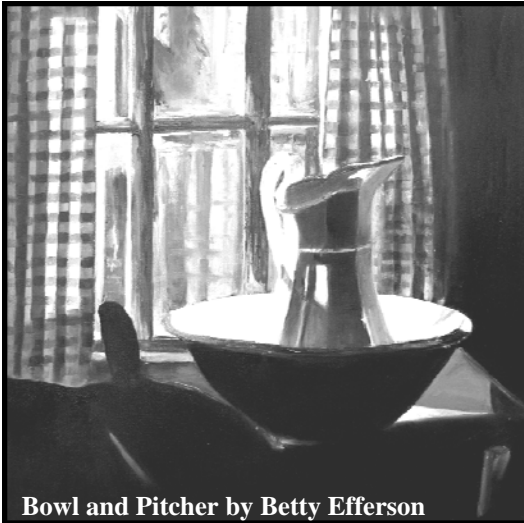
On March 3, 2012, the Burden Horticulture Society sponsored its second annual "Brush with Burden" juried art show. The entries were required to be original depictions of scenes on the 450-acre Burden properties on Essen Lane in Baton Rouge, including the grounds, buildings, flora and fauna of the Burden Center and the Rural Life Museum. The exhibition was open to all artists 18 years of age or older and all art media, including photography, were accepted.

The exhibit, which was held in the Steele Burden Orangerie on the Burden grounds, opened with a free reception in the Burden Conference Center, to which the public was invited.

Seventy-nine artists submitted 132 entries. Seventy-five of the works were juried into the exhibit, including one three-dimensional piece. Della Storm, a well-known local artist and art teacher from Slaughter, Louisiana, was the juror. Art show sponsors were: Ann Connelly Fine Art, Co-op Bookstore LLC, Daryl & Sons Custom Framing, Della Storms, Elizabethan Gallery, Dr. & Mrs. Jack Breaux, Jr., Judy Weaver, Larry Casso, Louisiana Art & Artists' Guild, Stephen and Jane Flowers. The winners were: 1. Best in Show, 'Master Gardener List' by Larry Casso (watercolor), 2. Judge's Choice, 'Chairs' Betty Efferson (oil), 3.



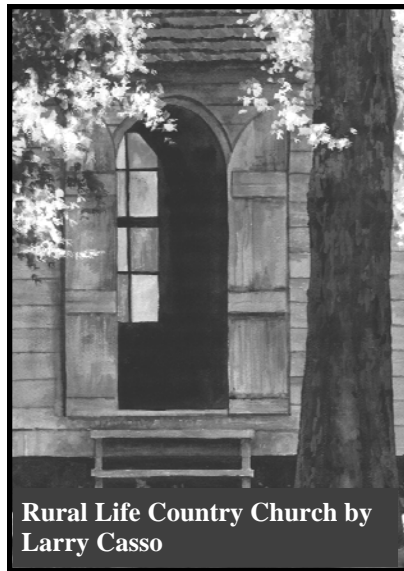
Della Storms, studying an entry for Brush with Burden



Bowl and Pitcher by Betty Efferson



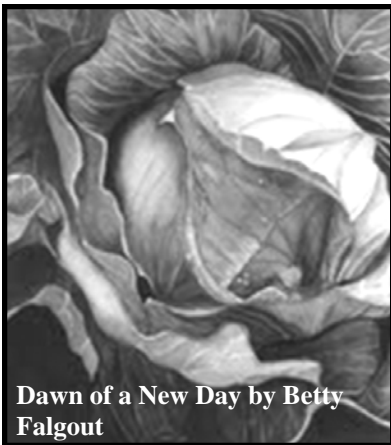
Viewing the Re-enactment by Lissa Lee



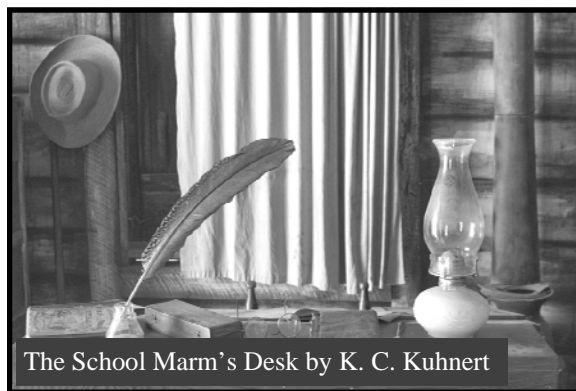
Rural Life Country Church by Larry Casso



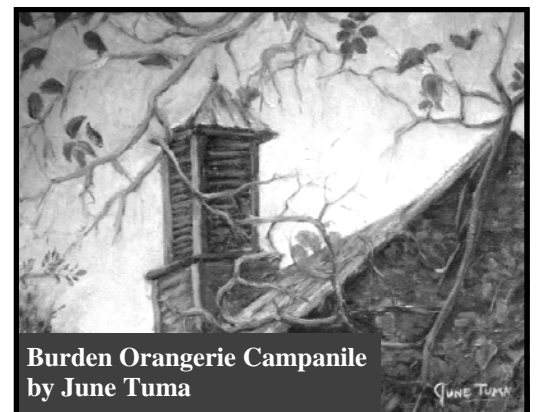
The Sentinel by Genevieve Lum



Dawn of a New Day by Betty Falgout



The School Marm's Desk by K. C. Kuhnert



Burden Orangerie Campanile by June Tuma

Honorable Mention, 'Dapple Blue' by Carol Ordogne (oil), 4. People's Choice 'Leaves in Light' by Betsy Neely (acrylic). All four winning entries will be exhibited at the Shaw Center for one month.



## **Herbal Medicine Making Workshop a Huge Hit**

*by Lanier Cordell*

The Baton Rouge Unit of The Herb Society of America recently hosted a two-day workshop on making herbal medicines. The workshop, conducted by Rosemary Gladstar, taught attendees how to make syrups, pills, lotions, creams, tinctures, tonics and more, to use as a first line of defense against illness and as treatments for minor conditions.

Gladstar is a pioneer in the herbal movement and has been called the “godmother of American Herbalism”. She is the founder of the *California School of Herbal Studies* and the author of numerous herb books including the best seller *Herbal Healing for Women*. Gladstar is also the co-founder of **Traditional Medicinal Tea Company** and did all of the original formulations for the company. She has taught extensively throughout the United States and worldwide at venues as varied as backyard gardens, native villages, garden clubs, universities and hospitals.

In addition to the extensive workshop, C. Ray Brassieur, Ph.D. presented a talk on the herbal heritage of the Atchafalaya Basin. Brassieur, an anthropologist on the faculty of the University of Louisiana Lafayette, discussed the plants that were native to the area and those that were brought by the many cultures who settled in the Acadiana area.

Lanier Cordell, a member of the Baton Rouge Unit, gave a presentation on Herbal Medicines of the Civil War. Cordell is a marketing, advertising and public relations professional, and published author who has done considerable research on the subject.

A large portion of profits raised by the event are dedicated to the construction of a Heritage Herb Garden at Burden Center that will feature the culinary and medicinal plants that are indigenous to our region and those that were brought here by the early settlers. (See article on The Herb Garden at Burden Center)

### **BHS Annual Events 2012**

<b>January 21</b>	<b>Arbor Day/Trees and Trails 10am-1pm</b>
<b>March 3-11</b>	<b>Brush with Burden Exhibition and Exhibition Reception on March 3rd</b>
<b>March 29</b>	<b>Spring Road Trip: Festivals of Flowers, Mobile, Alabama All day</b>
<b>April 12 &amp; 14</b>	<b>David Humphreys Photography Workshop</b>
<b>April 21</b>	<b>Burden Center Music Series: Spring Sing at Windrush 6:30-8:30pm</b>
<b>June 30</b>	<b>Garden Fest at Burden Center 8am-Noon</b>
<b>September 22-23</b>	<b>Corn Maze/Pumpkin Patch Fun Family Weekend 8:30am-5:00pm</b>
<b>September 29, and October 6, 13, 20, 27</b>	<b>Corn Maze Saturdays</b>
<b>October 24</b>	<b>Wine and Roses Dinner 6:30pm</b>
<b>TBA</b>	<b>Burden Center Music Series</b>
<b>TBA</b>	<b>Brush with Burden entry deadline</b>

---

# **BURDEN HORTICULTURE SOCIETY**

Presents a Photography workshop  
With

**David Carlyse Humphreys**

All proceeds go to Burden Horticultural Society

Introduction: April 12<sup>th</sup>, 7:00-8:30 pm

Field Trip Date: April 14<sup>th</sup>, 8:00-9:30am at  
Burden Center

Then, a special trip to David's studio for a hands-on  
exploration of studio photography,  
Photoshop, and Lightroom

**ALL LEVELS WELCOME**

**PARTICIPANTS ARE ENCOURAGED TO BRING 3 TO 5 IMAGES ON THE EVENING  
OF APRIL 12 TH, FOR A QUICK REVIEW BY DAVID, AND TO SHARE WITH OTHERS.**



**SIGN UP!**

ENCLOSE YOUR CHECK FOR PAYMENT OF \$150, PAYABLE TO  
BURDEN HORTICULTURE SOCIETY

MAIL TO: BHS, c/o JUDY FOIL, 434 CASTLE KIRK DR. BATON ROUGE, LA. 70808

## Thanks to our Contributors!

### 2011 Annual Appeal

Mr. and Mrs. Charlie Abboud  
Mr. Rodney Adams  
Ms. Patricia Alford  
Ms. Kathleen Allen  
Mr. John Amato  
Ms. Judy Amedee  
Mr. and Mrs. Richard Babin  
Ms. Margaret Bach  
Ms. Vera Bahlinger  
Ms. Annette Barton  
Mr. John Barton Sr  
Mrs. Brenda Baumgardner  
Ms. Donna Belanger  
Ms. Gaye Bennett  
Ms. Sheila Billingsley  
Mr. and Mrs. Clayton Blades  
Mr. and Mrs. Sidney Blitzer Jr.  
Ms. Ethel Boagni  
Ms. Sybil Boizelle  
Ms. Ginnie Bolin  
Ms. Joy Boudreaux  
Mrs. Betty Bourgeois  
Mr. Jim Brandt  
Ms. Janie Braud  
Dr. and Mrs. Jack Breaux  
Mr. and Mrs. Jimmie Bridges  
Mr. and Mrs. Shelby Brown  
Ms. Ruth Brown  
Mr. and Mrs. Donald Browning  
Ms. Diane Bruno  
Ms. Susan Bueche  
Ms. Karolyn Bull  
Ms. Margaret Campana  
Mr. and Mrs. Kenneth Campbell  
Mr. Larry Casso  
Ms. Georgeann Chaffee  
Ms. Norma Chiasson  
Ms. Nancy Claitor  
Mr. and Mrs. John Clark  
Ms Kay Clark  
Ms. Jeanne Clement  
Mr. and Mrs. Charles Coates  
Ms. Catherine Coates  
Ms. Cindy Cochran  
Mr. and Mrs. Tim Cockerham  
Ms. Robin Coerver  
Mr. and Mrs. William Cooper Jr.  
Ms. Susie Cortello  
Ms. Aline Creed  
Mr. and Mrs. Frank Cross  
Mr. Paul Davidson Jr.  
Mr. and Mrs. Andy Dean  
Mr. and Mrs. Z. David DeLoach  
Ms. Rose Doolittle  
Ms. JoAnn Doolos  
Ms. Mary Douglas  
Ms. Anne Dunn  
Mr. and Ms. Paul Dupuy  
Mr. and Mrs. Dick Eiche  
Ms. Carolyn Englert  
Mrs. Sherry Eubanks  
Mr. and Mrs. Wallace Eversberg  
Ms. Frances Falcon  
Mr. and Mrs. Ronald Falgout  
Mrs. Richard Feig  
Mr. and Mrs. Steve Flowers  
Judge and Mrs. Frank Foil  
Ms. Frances Fontenot  
Ms. Claire Fontenot  
Ms. Charla Foret

Mr. Dudley Fricke  
Ms. Karen Garland  
Mr. and Mrs. Will Gauthier  
Ms. Maurine Gauthier  
Dr. and Mrs. Keith Gibson  
Mr. and Mrs. R. A. Giroir Sr.  
Mr. and Mrs. John Graves  
Mr. and Mrs. Joseph Guercio Jr.  
Mr. and Mrs. Francis Guglielmo  
Mr. and Mrs. Tyson Hackenberg  
Ms. Leigh Harris  
Ms. Davanna Hart  
Mr. and Mrs. Robert Hawthorne Jr.  
Ms. Cathy Healey  
Ms. Mary Ann Hebert  
Mr. and Mrs. Fred Heroman Sr.  
Mr. and Mrs. Leo Heuval  
Mr. and Mrs. Benjamin Hillman  
Mr. and Mrs. Jimmy Hollis  
Ms. Rachael Howell  
Mrs. William Howell  
Mr. and Mrs. Terry Hubbs  
Ms. Shelia Hughes  
Ms. Susan Hultgren  
Ms. Margaret Humble  
Mr. George Irwin  
Mr. and Mrs. Charles Isbell  
Mr. and Mrs. Floyd Jines  
Ms. Linnie Keller  
Mr. and Mrs. Donald Kershaw  
Mr. and Mrs. Neil Kestner  
Mrs. Edith Kirkpatrick  
Ms. Simone Kramer  
Ms. Norma Landry  
Mr. Art Landry  
Ms. Barbara Laudun  
Dr. and Mrs. James Laville  
Dr. and Mrs. Randall Lea  
Ms. Lois Leblanc  
Ms. Jeanie LeBlanc  
Mr. and Mrs. Phillip Legendre  
Mrs. Montez LeGrande  
Ms. Helen Levy  
Ms. Lynn Loftin  
Ms. Brenda Macon  
Mr. and Mrs. Paul Marks, Jr.  
Dr. and Mrs. Michael Martin  
Ms. Dianne Martinez  
Ms. Mary Jo Mayfield  
Mr. and Mrs. Bob McAnelly  
Mr. and Mrs. Bobby McCall  
Mr. and Mrs. Kell McInnis  
Mrs Nona McInnis  
Mr. and Mrs. Ken McMillin  
Mr. and Mrs. Henry Miller Jr.  
Mrs. Ann Monroe  
Mr. and Mrs. John Monroe  
Ms. Donna Montgomery  
Ms. Kathy Morris  
Mr. and Mrs. Andrew Navarre  
Ms. Jeri Nicholson  
Mr. and Mrs. John Noland  
Dr. Neil Odenwald  
Mr. and Mrs. J. Huntington Odom  
Mr. Allen Owings  
Ms. Jane Paccamonti  
Mrs. Joan Pagel  
Ms. Barbara Parker  
Mr. Brandon Parlange  
Ms. Rita Patton  
Mr. and Mrs. G. Allen Penniman Jr.

Mr. and Mrs. Gerald Phares  
Mr. and Mrs. Randy Pipes  
Mr. and Mrs. William Potter  
Ms. Sarah Rayner  
Dr. and Mrs. Terry Rehn  
Ms. Conchita Richey  
Mr. and Mrs. Oran Ritter, Jr.  
Ms. Teri Rome  
Mrs. Marilyn Root  
Ms. Rita Salman  
Ms. Paula Samuels  
Dr. and Mrs. Geoffrey Say  
Mr. George Schaffer  
Mr. and Mrs. Loren Scott  
Ms. Patsy Shaw  
Ms. Cecile Shetler  
Ms. Anne Shiffler  
Ms. Susie Smith  
Ms. Sydney Snyder  
Ms. Audrey Somerville  
Ms. Anita Spaht  
Mr. and Mrs. Paul Spaht  
Mrs. George Stanford  
Mr. and Mrs. Rob Stuart  
Ms. Mary Tausin  
Ms. Lora Taylor  
Mr. and Mrs. Hubert Taylor  
Ms. Mary Tharp  
Mr. Don Thibodeaux  
Mr. Malcolm Tucker  
Mr. Terry Tuminello  
Mrs. Bert Turner  
Ms. Bitsy Van Norman  
Mr. and Mrs. Eddie Vigil  
Dr. Maud Walsh  
Ms Martha Watson  
Ms. Elaine Webster  
Ms. Donna Welch  
Dr. and Mrs. William Weldon  
Mr. and Mrs. Bolyn Wolf

### **In memory of Enos T. Parker**

Ms. Barbara Parker

### **In honor of Ginnie Bolin**

Dr. and Mrs. Mark Weaver

### **In honor of Sharon and Gerald Phares**

Dr. and Mrs. Mark Posner

### **In honor of Wanda Chase**

Judge and Mrs. Frank Foil

### **In honor of Mr. and Mrs. Stephen Wilson**

Mrs. Pauline Hernandez

### **In honor of Bob Souvestre**

Ms. Mary Legendre

### **Bonsai Garden**

Dr. Dawn Koetting

### **Brush with Burden**

Associated Women in the Arts  
Louisiana Cultural Economy  
Foundation

### **Burden Botanic Garden**

Mr. Steven Wagner

### **Horticulture Research Support**

Bequest of Estate of Mrs. Louise Deegan

### **Orangerie Restoration**

Mr. Steven Wagner

### **Trees and Trails Pavilion**

Ms. Catherine Coates  
Linda and Fred Grace  
Mr. Steven Wagner  
Charles and Carole Lamar/Charles Lamar  
Family Foundation



## Thanks to our Contributors!

### In honor of Cary Saurage

Mr. and Mrs. H. Norman  
Saurage III  
Mr. and Mrs. William J. Altenloh  
Mr. and Mrs. H. N. "Hank"  
Saurage IV  
Mr. and Mrs. James Moreland  
Mr. and Mrs. Matthew C. Saurage  
Ms. Stephanie Saurage Leijon

### Project Learning Tree Support

ExxonMobil Corporation  
Junior League of Baton Rouge Inc

### Windrush Gardens

Dr. and Mrs. Trent James

### Wine and Roses:

Ms. Pat Alford  
Ms. Fran Adcock  
Mr. Ira Paul Babin II  
Mr. and Mrs. Stan Bardwell  
Ms. Annette Barton  
Mr. John Barton Sr  
Ms. Cecile 'Skippy' Berner  
Ms. Ethel Boagni  
Ms. Ginnie Bolin  
Mr. and Mrs. John Boyce  
Mr. and Mrs. Windom Brignac  
Mr. Patrick Broderick  
Ms. Evelyn Brown  
Ms. Jane Bush  
Mr. and Mrs. James Byo  
Mr. John Capdeville  
Mr. and Mrs. Don Chase  
Ms. Jeanne Clement  
Mr. and Mrs. Dudley Coates  
Mr. and Mrs. Charles Coates  
Mr. and Mrs. William Cocreham

Ms. Robin Coerver  
Dr. Paul Coreil  
Mrs. Peggy Cox  
Ms. Aline Creed  
Mr. Louis Curet  
Ms. Ann Davenport  
Dr. and Mrs. David Davis  
Dr. Gresdna Doty  
Mr. and Mrs. Cary Dougherty  
Ms. Mary Douglas  
Ms. Barbee Edmonds  
Mrs. Sherry Eubanks  
Mr. and Mrs. Ronald Falgout  
Judge and Mrs. Frank Foil  
Ms. Maurine Gauthier  
Mr. and Mrs. John Graves  
Mr. and Mrs. Francis Guglielmo  
The Reverend and Mrs. George Haile  
Mrs. Margaret Hart  
Mr. and Mrs. Robert Hawthorne, Jr  
Mrs Pauline Hernandez  
Ms. Thelma Herthum  
Mr. and Mrs. William Hughes  
Dr. and Mrs. Trent James  
Mr. and Mrs. Len Kilgore  
Dr. Jeff Kuehny  
Mr. and Mrs. Bobby Lank  
Mr. Graig Luscombe  
Mr. Richard Manship  
Dr. and Mrs. Michael Martin  
Mr. Mitch Mayes  
Mr. and Mrs. Bobby McCall  
Mr. and Mrs. Ralph McKenzie  
Dr. and Mrs. Tom Meek  
Mr. and Mrs. Henry Miller Jr  
Mr. and Mrs. John Monroe  
Mr. and Mrs. Henson Moore

Mr. and Mrs. James Moreland  
Mr. and Mrs. Denis Murrell  
Mr. and Mrs. William Murrill  
Mr. and Mrs. John Noland  
Mr. and Mrs. Huntington Odom  
Mr. and Mrs. William O'Quinn  
Mr. and Mrs. Gene Owen  
Me. and Mrs. Hays Owen  
Mr. Allen Owings  
Mr. Brandon Parlange  
Dr. Ruth Patrick  
Mr. and Mrs. Mac Peek  
Mr. and Mrs. G. Allen Penniman Jr  
Dr. and Mrs. William Pryor  
Dr. and Mrs. Terry Rehn  
Ms. Elaine Robinson  
Mrs. Marilyn Root  
Dr. John Russin  
Mr. Cary Saurage  
Mr. Charles Schwing  
Ms. Susan Severance  
Ms. Connie Smith  
Mr. and Mrs. Paul Spaht  
Mr. and Mrs. Edgar Spielman Jr  
Mr. and Mrs. Louis Thibodeaux  
Mr. Terry Tuminello  
Mrs. Bert Turner  
Mr. John Turner and Mr. Jerry Fischer  
Ms. Denise Vanschoyck  
Dr. and Mrs. Victor Vignes  
Ms. Donna Welch  
Dr. and Mrs. William Weldon  
Mr. and Mrs. Kenny Wells  
Mr. Robert Wiemer  
Ms. Ann Wilkinson  
Mr. and Mrs. Richard Wood

## *"Reflection in the Garden"*

### 2012 Lunch Series

- April 2 Herb and Kitchen Gardening  
Peggy Cox
- May 7 Artist Inspiration: Planting a Monet Garden  
Sandra Patrick
- June 4 Cool Colors that Survive the Steamy South  
Cindy Moran
- July 2 Botanical Treasures to Tap Into  
Jeff Kuehny
- August 6 The "Green" Garden: Recycling in the Garden  
Dan Gill
- September 10 Greaxing Organic in the South  
Carl Motsenbocker
- October 1 Adding Bling to your Garden with Bulbs  
Al O'Brien
- November 5 "Pass-along" the Plants Please: Heirloom Plants'  
Neil Odenwald
- December 3 Building a Garden Home for your Birds  
Emily Winners

\* 2nd Monday due to holiday

Noon to 1:00 PM in the  
Ione Burden Conference  
Center

Special guest speakers!  
Bring a brown bag  
lunch!

Drinks will be provided!

## Commemorating Arbor Day at Burden

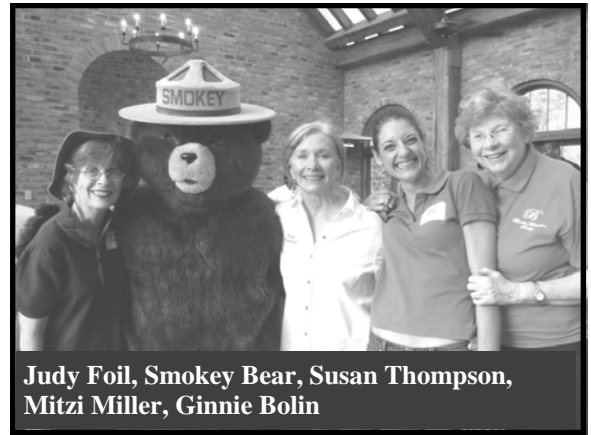
One day each year caring citizens around the country gather to celebrate Arbor Day by planting and caring for trees. Burden Horticulture Society members, organizations and corporations came together at Burden Center on January 21 to commemorate Arbor Day.

Arbor Day offered several opportunities to get children engaged in the natural world around them. The children used rubber stamps and leaf presses to explore characteristics of different types of trees. Some even participated in a

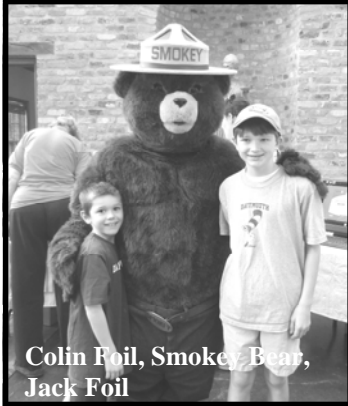
scavenger hunt in Burden woods and enjoyed the bonfire that blazed just outside of the Steele Burden Memorial Orangerie. Presentations by Smokey The Bear were a fun way for children to learn how to protect the woods that they enjoy by preventing wild-fires.

Adult and youth patrons participated in planting trees that will continue to enhance the beauty Burden woods. Each tree planted came with a set of GPS coordinates so participants could come back to find their trees one, two or even ten years later and track its growth.

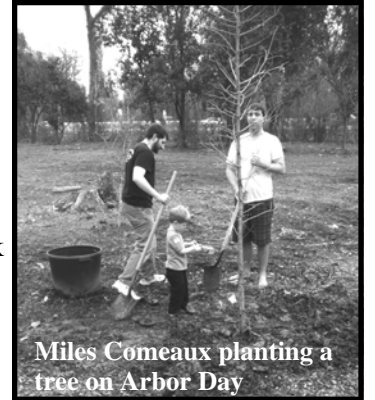
Arbor Day was a grand success: hundreds of people who gathered in appreciation of



Judy Foil, Smokey Bear, Susan Thompson, Mitzi Miller, Ginnie Bolin



Colin Foil, Smokey Bear, Jack Foil



Miles Comeaux planting a tree on Arbor Day



Entergy Sponsors and St. Joseph's Volunteers



Jack McCarthy and Mark Murrell



Karen Holden, Benjamin Holden, Pat Bergeron

### \*\*\*Volunteers Wanted\*\*\*

Want to join a great group? Mail the below form to 4560 Essen Lane (70809) or use the entry form on the 'Join Us' page of BHS website ([www.BurdenHorticultureSociety.com](http://www.BurdenHorticultureSociety.com)) or call or email our new volunteer coordinator, **Simone Kramer** (225-235-8896, [SKramer@agcenter.lsu.edu](mailto:SKramer@agcenter.lsu.edu)). We'd love to hear from you.

#### Volunteers Opportunities:

- |  |  |
|--|--|
| <input type="checkbox"/> Gardening                 | <input type="checkbox"/> Publicity                                     |
| <input type="checkbox"/> Clerical                  | <input type="checkbox"/> Speakers                                      |
| <input type="checkbox"/> Annual Events             | <input type="checkbox"/> Volunteer Coordination                        |
| <input type="checkbox"/> Reflections in the Garden | <input type="checkbox"/> Membership                                    |
| <input type="checkbox"/> Database                  | <input type="checkbox"/> Fundraising                                   |
| <input type="checkbox"/> Clerical                  | <input type="checkbox"/> Trees and Trails, Maintenance and Development |
| <input type="checkbox"/> Wine and Roses Committee  | <input type="checkbox"/> Trees and Trails, Docents                     |
|  | <input type="checkbox"/> Other: _____                                  |

Your Name and phone number:

## Annual Membership Drive

Dear Friends of BHS,

What a thrill to receive a rare passalong plant. We can't wait to watch it grow. But, as anyone who loves plants knows, the advice that is passed along with the plant is every bit as important as the plant. Our mother-in-law shows us how to divide the crinum and our neighbor tells us how to cut back our iris.

Just like those special people, the Burden Horticulture Society is here to offer you advice or hands on experience. Our Burden Center, 440 acres located off Essen Lane, offers a rare opportunity to learn from the experts, many of whom are volunteers, who maintain our gardens and our trails.

Membership in the Burden Horticulture Society offers free entry to our monthly Reflections programs, a quarterly newsletter with informative articles, and special privileges when visiting any of the over 250 member gardens of the American Horticulture Society. Your memberships also allow BHS to sponsor our most important education program, Project Learning Tree, designed especially for school children.

The Burden family had a big vision when they donated this property to LSU. Join us as we grow into that vision. With your membership, we come closer each year.

Sincerely,

*Quita J. Foil*

Chair BHS

PS> If your membership is current, you will receive a reminder to renew when it is up.  
.....

Please detach and mail to the Burden Horticulture Society, 4560 Essen Lane, Baton Rouge, LA 70809 with your check made payable to the LSU Foundation/BHS.

Annual Membership Dues:      \_\_\_\_\_ Individual \$40                      \_\_\_\_\_ Family \$50

I would also like to make a gift in the amount of \$ \_\_\_\_\_

(Your gift will be accepted by LSU Foundation for the benefit of the Burden Horticulture Society.)

TOTAL \$ \_\_\_\_\_

\_\_\_\_\_ Please contact me about volunteer opportunities!

Member Name \_\_\_\_\_

Daytime Phone \_\_\_\_\_

Address \_\_\_\_\_

Email (optional) \_\_\_\_\_ City/State/Zip \_\_\_\_\_

Burden Center  
4560 Essen Lane  
Baton Rouge, LA 70809



---

## What's Happening with Our Friends:

**Hilltop Arboretum:**  
[www.lsu.edu/hilltop](http://www.lsu.edu/hilltop)

**Junior Master Gardener Spring Camp**  
April 10-11, 9am-1pm

**Spring Garden Tour I**  
Gardens in the 'Dales'  
April 15, 1-5pm

**Hilltop Summer Academy**  
June 4-14

**Spring Garden Tour II**  
Gardens in the 'Dales'  
May 6, 1-5pm

**Junior Master Gardener Summer Camp**  
June 8-22

**Baton Rouge Green:**

**Baton Rouge Green "Online Plant Sale"**  
March 15-April 16  
Pick up plants April 19 at Burden Center  
Place your orders at [www.batonrougegreen.com](http://www.batonrougegreen.com)



Moonlight hike led by Trail Master Don Thibodeaux.

