

**ROUNDTABLE: THE FUTURE OF LOUISIANA ENERGY AND THE ENVIRONMENT**

***-ENVIRONMENTAL ISSUES ASSOCIATED WITH THE ENERGY INDUSTRY-***

**Presentation to**

**Energy Summit 2014  
The Future of Louisiana Energy  
LSU Center for Energy Studies**

by

**Karen Gautreaux  
Director of Government Relations  
The Nature Conservancy, Louisiana**

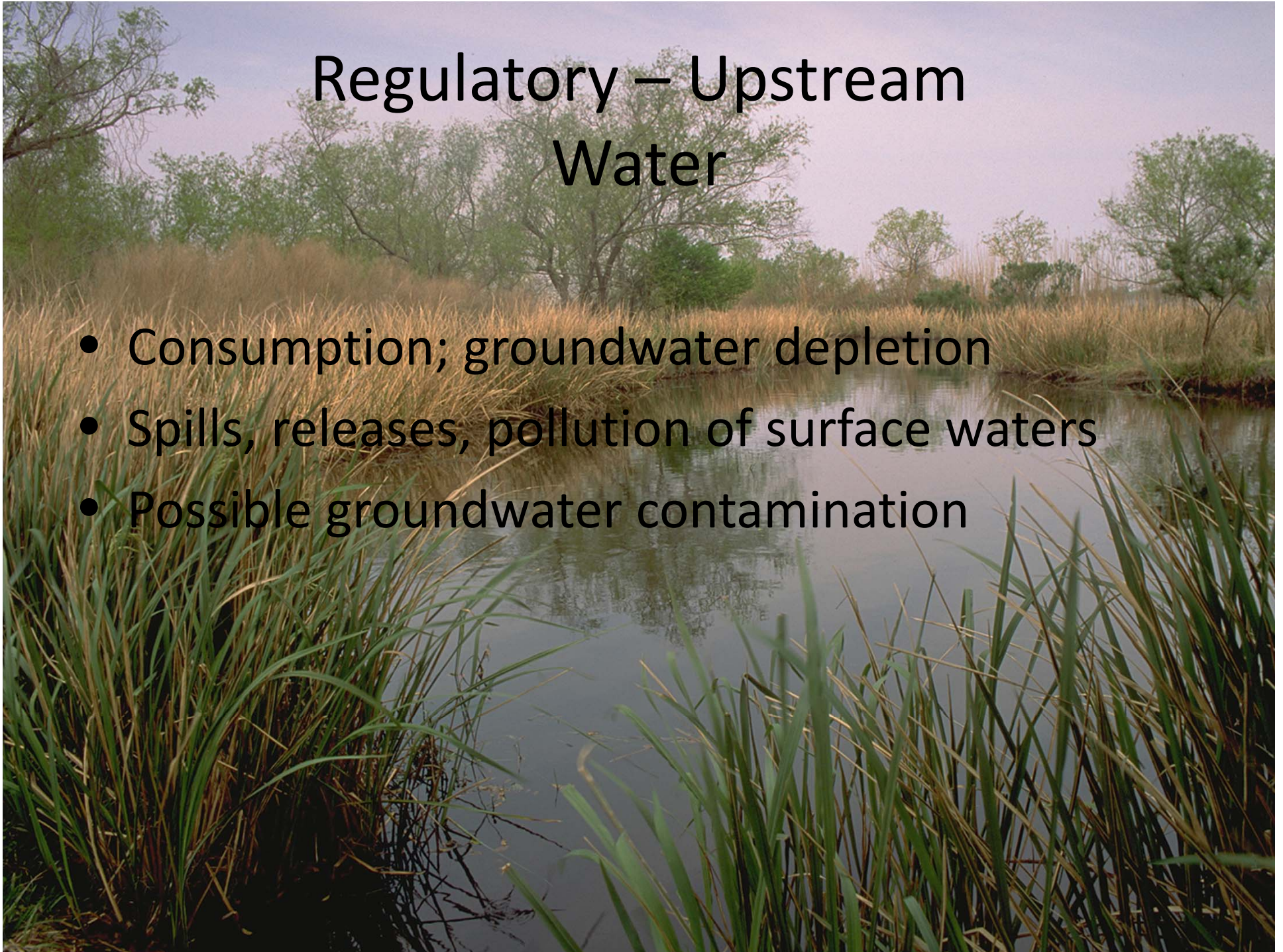
**October 22, 2014**

# Two Perspectives

- Upstream and Downstream Activities
- Conservation Opportunities

# Regulatory – Upstream Water

- Consumption; groundwater depletion
- Spills, releases, pollution of surface waters
- Possible groundwater contamination



# Upstream - Air

- Air toxics emissions
- Emissions of ozone precursors
- GHG emissions

# Upstream – Waste Management

- Handling/disposal of drilling/fracking wastes
- Geologic problems with wastewater injection
- Naturally occurring radioactive materials (NORM) in drilling wastes, contaminated piping, old gas lines
- Flaring



A photograph of a wooded area with a wooden structure and a large piece of debris hanging from it. The structure appears to be a simple wooden frame or a small building under construction, with a large, dark, triangular piece of material hanging from the top. The background is filled with bare trees, suggesting a winter or late autumn setting. The overall scene is somewhat cluttered and appears to be a site of human activity in a natural environment.

## Upstream - Land

- Habitat fragmentation
- Pipelines construction
- Legacy issues with surface contamination from earlier activities

# Upstream – People (Socioeconomic)

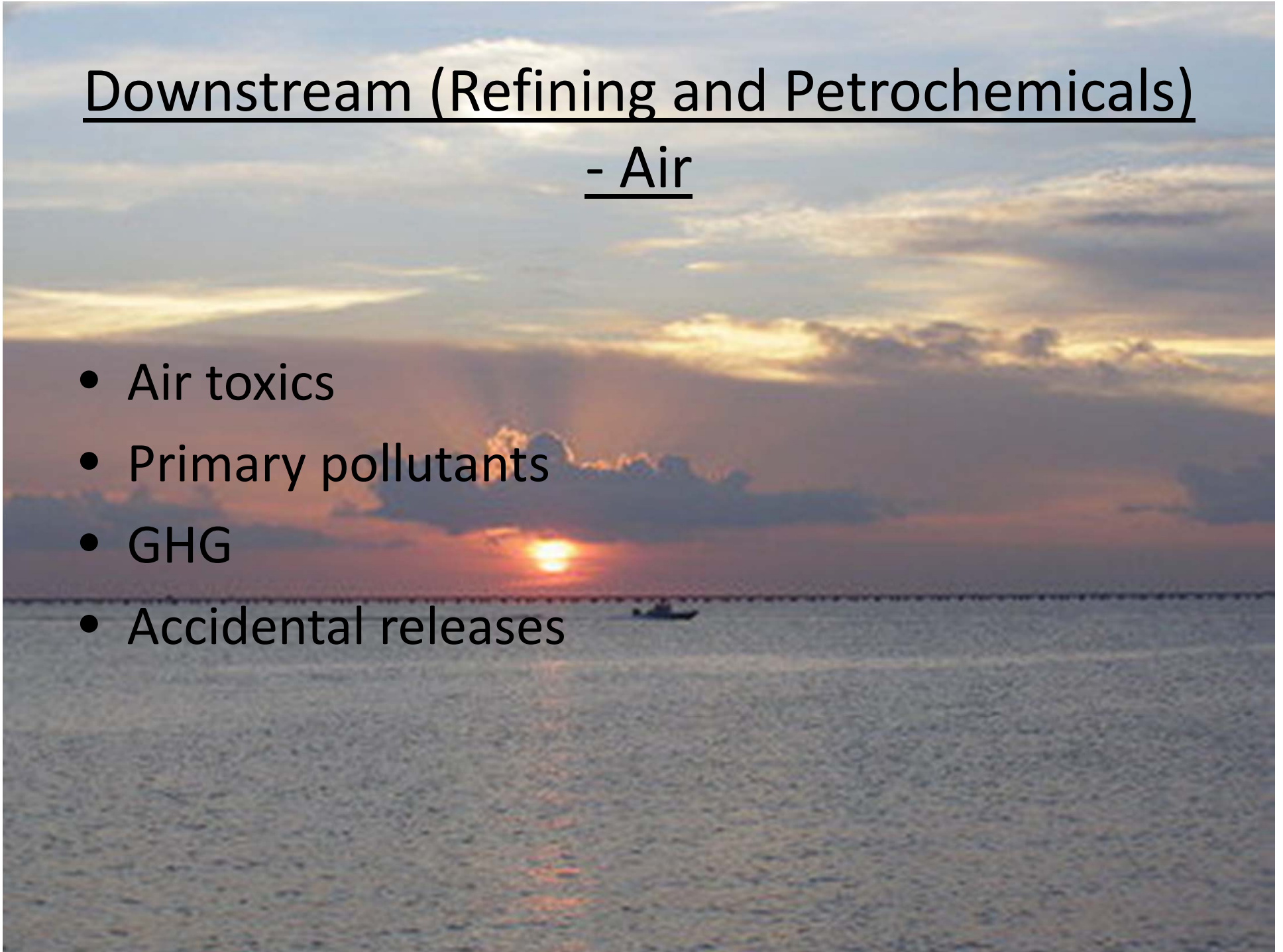
- Noise/dust/aesthetics
- Degradation of rural roadways and bridges
- Adequate supporting infrastructure
- Boom and bust concerns



# Downstream (Refining and Petrochemicals)

## - Air

- Air toxics
- Primary pollutants
- GHG
- Accidental releases





## Downstream - Water

- Inadequately treated wastewater and spills
- Pipeline/product/transportation spills



# Conservation Opportunities

- Conservation by Design
- Comprehensive Water Policy that provides for current and future needs
- Natural Infrastructure

